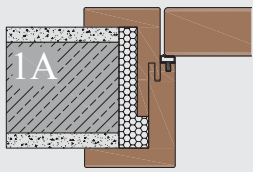


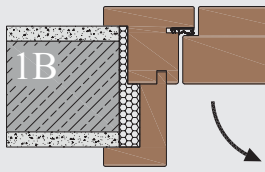
INTRA wandüberstehende Zargensysteme *Jamb and casings mounted on the wall*

INTRA 63/75



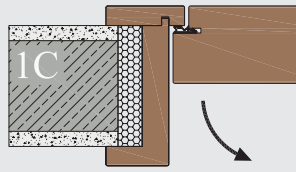
2-schalige Zarge auf der Wand
Spiegelbreite 63/75 mm
*Split jamb, casing
widths 63/75mm*

INTRA IN 75/52



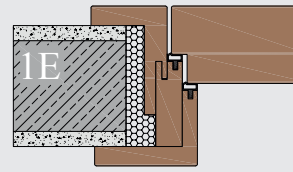
Blockrahmen auf der Wand mit Halb-
zarge. Öffnungsrichtung nach innen
*Block jamb with half casing.
Reversed swing direction*

INTRA IN 65/52



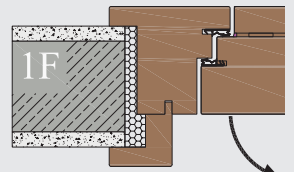
2-schalige Zarge auf der Wand.
Öffnungsrichtung nach innen
Split jamb, reversed swing direction

INTRA DF 63/88



Variante wie 1A für erhöhten
Schallschutz (2. Dichtungsebene)
*Version as for 1A with enhanced
sound insulation (2. sealing plane)*

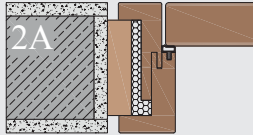
INTRA IN-DF 100/52



Variante wie 1B für erhöhten
Schallschutz (2. Dichtungsebene)
*Version as for 1B with enhanced
sound insulation (2. sealing plane)*

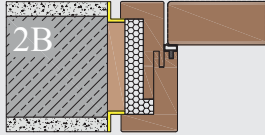
INTRA UZ wandbündige Zargensysteme *Jamb and casing flush with the wall*

INTRA UZ 40/52



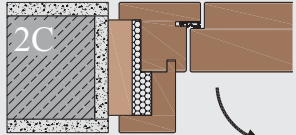
2-schalige Zarge mit Unterzarge.
Spiegelbreite 40/52 mm
*Split jamb with wooden
sub-frame. Casing widths
40mm/52mm*

INTRA UZ-ALU 40/52



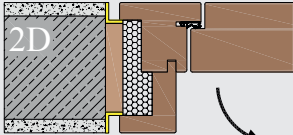
2-schalige Zarge mit Unterzarge
und Alu-Anputzprofil
Spiegelbreite 40/52 mm
*Split jamb with sub-frame and
aluminum wall finishing strips.
Casing widths 40mm/52mm*

INTRA IN-UZ 75/52



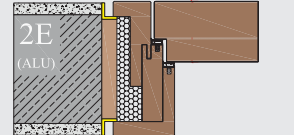
Blockrahmen mit Unterzarge und
Halbzarge. Öffnungsrichtung
nach innen
*Block jamb with wooden sub-
frame and half casing. Reversed
swing direction*

INTRA IN-UZ-ALU 75/52



Blockrahmen mit Unterzarge und
Alu-Anputzprofil, sowie Halbzarge.
Öffnungsrichtung nach innen
*Block jamb with sub-frame and
aluminum wall finishing strips,
half casing. Reversed swing direction*

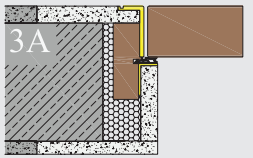
INTRA UZ-ALU-DF



Variante wie 2B für erhöhten
Schallschutz (2. Dichtungsebene)
*Version as for 2B with enhanced
sound insulation (1. sealing plane)*

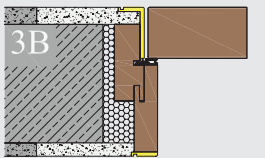
FLAT ALU wandbündige Zargensysteme *Jamb and casing flush with the wall*

FLAT ALU-20



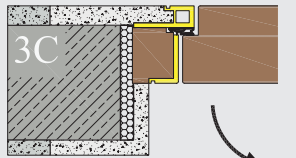
Verdeckter Blockrahmen mit Winkel-
profil. Spiegelbreite 20mm
*Concealed block jamb with angle
profile. Casing width 20mm*

FLAT ALU-20-U



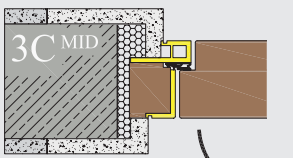
2-schalige Zarge mit Winkelprofil
Split jamb with angle profile

FLAT ALU-20-IN



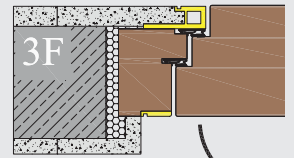
Blockrahmen mit Winkelprofil.
Öffnungsrichtung nach innen
*Block jamb with angle profile.
Reversed swing direction*

FLAT ALU-20-IN



Variante wie 3C für
mittigen Türsitz
*Version as for 3C for centered
door position*

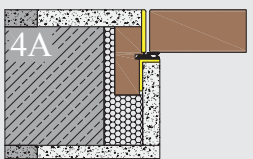
FLAT ALU-20-IN-DF



Variante wie 3C für erhöhten
Schallschutz (2. Dichtungsebene)
*Version as for 3C with enhanced
sound insulation (2. sealing plane)*

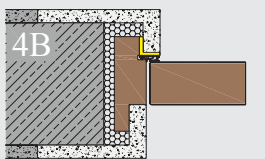
FLAT VD verdeckte Zargensysteme *Jamb and casing integrated in the wall*

FLAT VD



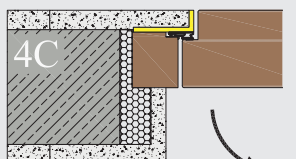
Verdeckter Blockrahmen mit
Alu-Schutzprofil
*Concealed block jamb with
aluminum protective profile*

FLAT VD-MID



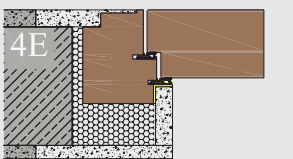
Verdeckter Blockrahmen für
mittigen Türsitz
*Concealed block jamb for
centered door position*

FLAT VD-IN



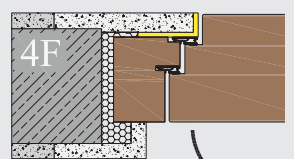
Verdeckter Blockrahmen mit
Alu-Schutzprofil. Öffnungsrichtung
nach innen
*Concealed block jamb with
aluminum protective profile.
Reversed swing direction*

FLAT VD-DF



Variante wie 4A für erhöhten
Schallschutz (2. Dichtungsebene)
*Version as for 4A with enhanced
sound insulation (2. sealing plane)*

FLAT VD-IN-DF



Variante wie 4C für erhöhten
Schallschutz (2. Dichtungsebene)
*Version as for 4C with enhanced
sound insulation (2. sealing plane)*

Technische Änderungen vorbehalten. Weitere Zargenvarianten, wie Brand-, Rauch- und Schallausführungen auf Anfrage.
Subject to technical modifications. Further versions like fire protection, smoke control and sound insulation on request.